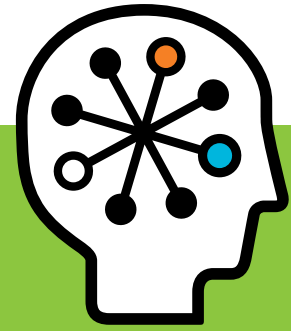




HP ProLiant BL460c G6 Server Blade

Data sheet



The HP ProLiant BL460c G6 Server Blade, the newest model of the BL460c, provides enterprise-class features for high performance and reliability—without compromising energy efficiency or density.

The HP BL460c Server is the most popular blade in the world, representing 1 in 4 of all new blades deployed.¹ Now packing two processors, two hot-plug hard drives, up to 96 GB of memory, 12 DIMM slots, and a dual-port 10 Gigabit Ethernet adapter into a half-height blade, the BL460c G6 comes with improved features that give IT managers the performance and expandability required for demanding data center applications. It also provides industry-leading expansion and management solutions and the latest energy-efficient technologies for dense compute environments.

The ProLiant BL460c G6 server blade is designed for large enterprise data centers, mainstream/mid-sized data centers and departments, and small sites and branch offices. Continuing to deliver power-efficient compute power with expanded memory and I/O for maximum performance, the BL 460c G6 is well suited for general purpose computing as well as large data centers with heterogeneous applications.

Combined with an HP BladeSystem c3000 or c7000 enclosure, the BL460c G6 helps you standardize multiple tiers of your application environment on a common platform, enabling you to lower costs and simplify operations. The BladeSystem c7000 enclosure supports up to 16 BL460c server blades and the c3000 enclosure allows you to fit in 8 server blades—giving you extreme flexibility to meet your unique needs. In addition, the HP BL460c G6 supports the broadest array of operating systems and applications of any blade, from Windows and Linux to Citrix XenServer and VMware.

Key features and benefits

Enhanced performance

Now with the latest high-performance Intel® Xeon® 5500 series processors and greater memory, the BL460c G6 delivers greater system scalability.

- Process more data and get faster responses with up to two (2) Intel Xeon 5500 series processors featuring QuickPath Interconnect
- Give your applications up to 96 GB of DDR3 memory, knowing you have the protection of Advanced ECC
- Prepare for the future with an integrated dual-port 10Gb Ethernet server adapter with support for HP Virtual Connect Flex-10 technology that allows you to fine-tune networking and reduce network costs

¹ IDC Worldwide Server Tracker, Q208, by unit volume

- Choose up to two hot-plug small form factor (SFF) high-performance serial attached SCSI (SAS) drives or lower-cost serial ATA (SATA) drives for cutting-edge storage performance
- Make use of the HP Smart Array P410i controller for hardware RAID 0 and 1, with optional cache modules for increased performance
- Conserve power without affecting performance with the built-in HP Power Regulator that provides an innovative operating system-independent power management feature for server power consumption and system performance
- Reclaim trapped power in your data center by safely limiting server power consumption with Dynamic Power Capping

Easy management

Industry-leading management and configuration tools offer superior remote administration, lifecycle management, and resource utilization to help lower total cost of ownership. Conserve valuable IT resources and time by centralizing and simplifying management functions with the ProLiant Onboard Administrator powered by Integrated Lights-Out 2 (iLO 2) and Insight Control Suite. HP Insight Control is an integrated suite of software that simplifies the provisioning and management of HP BladeSystem infrastructures

- Achieve unprecedented levels of remote management with iLO 2, which includes virtual KVM and a graphical remote console
- Enhance your server uptime and health with HP Systems Insight Manager, available at no additional cost
- Rely on the ProLiant Onboard Administrator that is powered by iLO 2 and simplifies server setup, health monitoring, power and thermal control, and remote administration of ProLiant servers
- Use the capabilities of HP Insight Dynamics - VSE to analyze and optimize physical and virtual resources in the same way

Note: ProLiant Onboard Administrator functions without additional software and can be accessed local to the server or remotely through a Web browser.

Enhanced power efficiency

Inefficient, power-hungry systems can create a rise in electricity costs and stress the power and cooling capacity of your site. However, the BL460c G6 includes new technology to improve power efficiency, including phase shedding to tune voltage regulation to workload demands. There are also new features to give more control over power usage, such as the enhanced ability to turn off processor cores and settings to scale down memory speeds and save power.

Greater versatility

- Lower your power bills with low-voltage processor and low power memory options that yield higher performance per watt
- Increase your I/O bandwidth with optional Fibre Channel, iSCSI, Ethernet, InfiniBand, and SAS adapters
- Improve IT ROI with access to our technical experts through HP Proactive Select, a service access program based on a simple credit system to build the plan you need—no more, no less
- Expand storage beyond the integrated 2 hot-plug hard drive bays with HP BladeSystem storage options including direct attach blades and shared storage blades

Reliability

- Protect your data using the 256 MB and 512 MB cache modules available for the integrated storage controller, with additional battery backup options
- Improve uptime for critical servers with the Advanced Memory Protection features including Mirrored Memory
- Upgrade or configure the ROM safely with the onboard redundant ROM

Ideal environment

Large enterprise data centers

The HP ProLiant BL460c G6 is ideal for environments where IT needs to reduce server floor space and cost while increasing flexibility and uptime.

- Dense half-height blade form factor that lets you fit up to 16 fully featured servers into 10U of rack space
- High-performance remote manageability to support lights-out data center or remote site deployment
- Flexibility to tailor its features to fit your needs, with two mezzanine slots to add additional storage and networking capability

HP ProLiant BL460c G6 Server Blade



| Processor and Memory | |
|--|---|
| Processor type | Intel® Xeon® 5500 series |
| Available processors | Quad-Core Processors Intel® Xeon® Processor X5570 (2.93 GHz, 8 MB L3 Cache, 95W) Intel® Xeon® Processor X5560 (2.80 GHz, 8 MB L3 Cache, 95W) Intel® Xeon® Processor X5550 (2.66 GHz, 8 MB L3 Cache, 95W) Intel® Xeon® Processor E5540 (2.53 GHz, 8 MB L3 Cache, 80W) Intel® Xeon® Processor E5530 (2.40 GHz, 8 MB L3 Cache, 80W) Intel® Xeon® Processor E5520 (2.26 GHz, 8 MB L3 Cache, 80W) Intel® Xeon® Processor E5506 (2.13 GHz, 4 MB L3 Cache, 80W) Intel® Xeon® Processor E5504 (2.00 GHz, 4 MB L3 Cache, 80W) Intel® Xeon® Processor L5520 (2.26 GHz, 8 MB L3 Cache, 60W) Intel® Xeon® Processor L5506 (2.13 GHz, 4 MB L3 Cache, 60W) Dual-Core Processors Intel® Xeon® Processor E5502 (1.86 GHz, 4 MB L3 Cache, 80W) |
| Low wattage processor offerings | Yes |
| Processor core | Dual and Quad |
| Processor cache | 4 MB or 8 MB shared L3 cache |
| Max processor speed | 2.93 GHz |
| Multi-processor | 2 |
| Processors per 42U rack | 128 |
| Memory type | DDR3 Registered and Unbuffered DIMMs |
| Standard memory | 6 GB (3 x 2 GB) PC3-10600 (DDR3-1333) Registered DIMMs |
| Max memory | Up to 96 GB memory with Registered DIMMs, or up to 24 GB memory with Unbuffered DIMMs |
| Memory slots | 12 |
| Advanced memory protection | Advanced ECC Support for Mirrored Memory |
| Storage type | Hot plug SFF SAS Hot plug SFF SATA |
| Max number of hard drives | Up to two Serial Attached Small Form Factor Hot plug SAS or SATA Drives |
| Expansion slot | Two I/O expansion mezzanine slots (x8 PCI Express) |
| Storage controller | HP Smart Array P410i Controller (RAID 0/1) |
| Deployment | |
| Form factor | Blade |
| Networking | Embedded NC532i Dual Port Flex-10 10GbE Multifunction Server Adapter |
| Remote management | ProLiant Onboard Administrator powered by iLO 2 |
| Redundant power supply | Enclosure-based power |
| Warranty | 3-year parts/3-year labor/3-year onsite |

Data centers that need high-performance servers based on industry standards

- Maximized performance with up to two Intel Xeon 5500 series processors featuring Turbo Boost Technology
- Industry-standard PC3-10600 (DDR3-1333) memory, including scalable Registered DIMMs, low-cost Unbuffered DIMMs and low power DIMM options
- Support for a broad portfolio of industry-standard operating systems and hypervisors, including varieties of Windows, Linux, VMware, Citrix, NetWare, and more
- Proven performance with enterprise applications such as SAP, PeopleSoft, Siebel, Oracle, and JDE

Sophisticated SMB and remote office locations

- Time- and cost-saving management tools, including HP Systems Insight Manager provided at no additional cost
- Supported in the HP BladeSystem c3000 enclosure, an all-in-one infrastructure built from the ground up to simplify small sites with demanding compute and storage needs
- Virtual KVM graphical remote console with the ProLiant Onboard Administrator

HP Financial services

HP Financial Services provides innovative financing and financial asset management programs to help you cost-effectively acquire, manage and ultimately retire your HP solutions. For more information on these services, contact your local HP representative, or visit: www.hp.com/go/hpfinancialservices

For more information

For more information about the HP ProLiant BL460c G6 Server, contact your local HP representative, or visit: www.hp.com/servers/bl460c-g6

HP Services

When Technology Works, Business Works.

The challenge of virtually every IT organization is similar: to develop and maintain an agile, efficient server infrastructure that delivers the service levels your business needs.

HP Technology Services offer a comprehensive portfolio of HP Care Pack Services to help design, deploy, manage, and support your Blades environment, with easy-to-buy, easy-to-use support packages.

Minimum Recommended HP Care Pack offerings

- Three-year, 4-hour response onsite 24-hour x 7-day hardware support
- Blades Infrastructure plus Enhanced Network Installation and Startup services

Enhanced service level Care Pack offerings

- **Three-year Support Plus 24:** Integrated 24x7 hardware and software support
- **Proactive Select:** Access to HP best-in-class technical consultants. Purchase service credits and obtain expertise when needed

Benefit from HP Care Pack Services helping you:

- Reduce deployment time and manage blade server solutions smoothly and efficiently
- Increase uptime and performance of servers availability to your business
- Detect, diagnose, and repair problems to quickly save time, money, and resources

For more information, visit

www.hp.com/services/bladestystem or

www.hp.com/go/proliant/carepack

Technology for better business outcomes

To learn more, visit www.hp.com/servers/bl460c-g6

© Copyright 2009 Hewlett-Packard Development Company, L.P. The information contained herein is subject to change without notice. The only warranties for HP products and services are set forth in the express warranty statements accompanying such products and services. Nothing herein should be construed as constituting an additional warranty. HP shall not be liable for technical or editorial errors or omissions contained herein.

Intel and Xeon are trademarks or registered trademarks of Intel Corporation or its subsidiaries in the United States and other countries.

4AA2-4816ENW, March 2009

